

This map is an approximation of actual country borders.

Country capacity on:

✓ Yes ✖ Partial ✗ No NR No Response

EDUCATION REGULATION

- Master list of accredited education institutions ✓
- Accreditation mechanisms for education institutions ✓
- Standards for duration and content of education ✓
- Standards for interprofessional education ✓
- Standards for faculty qualifications† NR

PRACTICE REGULATION

- Nursing council/authority for regulation of nursing† ✓
- Fitness for practice examination† ✓
- Continuing professional development ✓
- Existence of advanced nursing roles ✓

WORKING CONDITIONS

- Regulation on working hours and conditions ✓
- Regulation on minimum wage ✓
- Regulation on social protection ✓
- Measures to prevent attacks on HWs ✓

GOVERNANCE AND LEADERSHIP

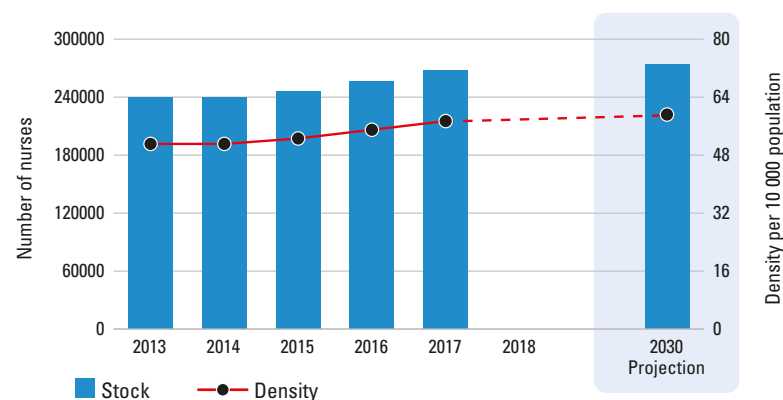
- Chief Nursing Officer position† NR
- Nursing leadership development program† NR
- National association for pre-licensure students† NR

Spain

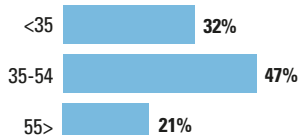
	COUNTRY	WHO REGION
Total population (UN population prospects, 2019)	46736782	930166618
UHC Service Coverage Index (0-100 points, 2017)	83	—
Life expectancy at birth m/f (years, 2016)	80.3/85.7	74.2/80.8
Probability of dying under five (per 1 000 live births, 2018)	3.0	8.6
Probability of dying between 15 and 60 years m/f (per 1 000 population, 2016)	74/38	155/70
Gross domestic product (GDP) (per capita US\$, 2017)	28248	23764
Current health expenditure as a per cent of GDP (2017)	8.9	7.8
Current health expenditure per capita (US\$, 2017)	2506	2387

Source: WHO

Nursing stock and density 2013-2018



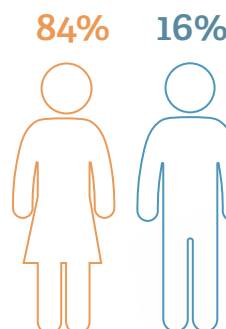
Age distribution



Nurse mobility

Foreign trained NR
Foreign born NR

Sex distribution



Nursing personnel (latest year)

267266

Nursing professionals
267266

Nursing associates
0

Nurses not further defined
0

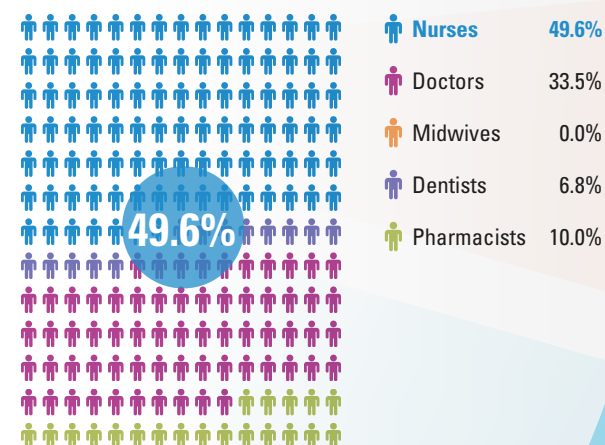
Share of professional nurses
100%

Density
57.4
per 10 000 population

Graduates per year
10115

Minimum duration of training
NR

Share of nurses within the health workforce



Issues for consideration

Density above threshold, no estimation for shortage.

*As compared to a benchmark density. Details in *State of the world's nursing 2020 report* and *Global Strategy on Human Resources for Health: Workforce 2030*

Source: National Health Workforce Accounts (NHWA), 2020 except †. Latest available data are displayed. Includes multiple data sources such as the OECD/Eurostat/WHO EURO Joint Data Collection, labour force survey, census data and estimates from WHO for shortages. Stock and density projection by 2030 based on a simple stock and flow model. See full report for further details. NR=Not reported. Data as of 10 March 2020.